

susquehanna

JAN/FEB 2009

Style

mission organization
Tips for Streamlining
Your Home & Life!

money matters
Sound Investment Advice
for the New Year

2009
Kitchen
& Bath Contest
WINNERS
Revealed!

WGAL-TV's
Meredith
Jorgensen
gets married



6 Local Weddings

Plus: Trends in Fashions, Flowers,
Invitations, Favors & More!

DISPLAY UNTIL MAR 1 \$3.95



www.SusquehannaStyle.com

ADAMS | CUMBERLAND | DAUPHIN | LANCASTER | LEBANON | PERRY | YORK

Ideas. Advice. Solutions.

at this year's PA Home Show

Special Events and Attractions

Showcase Home & Auction

Decorated and landscaped, tour this beautiful home built by Cumberland-Perry Area Vo-Tech School students and auctioned to the highest bidder on Sunday, March 8th.

GardenFaire

One of our most popular exhibits returns with beautiful landscaping displays and gardening ideas.

Plus Shows-Within-A-Show

Outdoor Living Exhibit & Giveaway
Watch CBS-21 for giveaway details.



Green Room

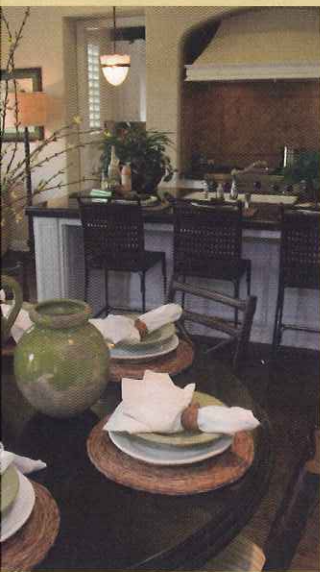
Energy solutions for a healthier world.

Antique Appraisal Clinics

Junk or gem? Find out here.

Builders Lane

The best in new home construction.



www.pa**h**omeshow.com

Feb. 28 through Mar. 8 2009

PA State Farm Show Complex
Harrisburg
Exit 67A off I-81

Mon-Sat 10a-9p
Sun 10a-6p

\$8 Adults
Children 12 & under FREE
when accompanied by an adult.



susquehanna style presents:

The 2009

Kitchen & Bath Design Contest WINNERS



■ ATTENTION TO DETAIL. QUALITY MATERIALS. A SOLID RELATIONSHIP BETWEEN DESIGNER AND CLIENT. This year's award-winning kitchens and baths might not look alike, but they share common elements that make each one a success—and garnered our editors' attention in this first-ever *Susquehanna Style Magazine* design contest.

stories by M. Diane McCormick

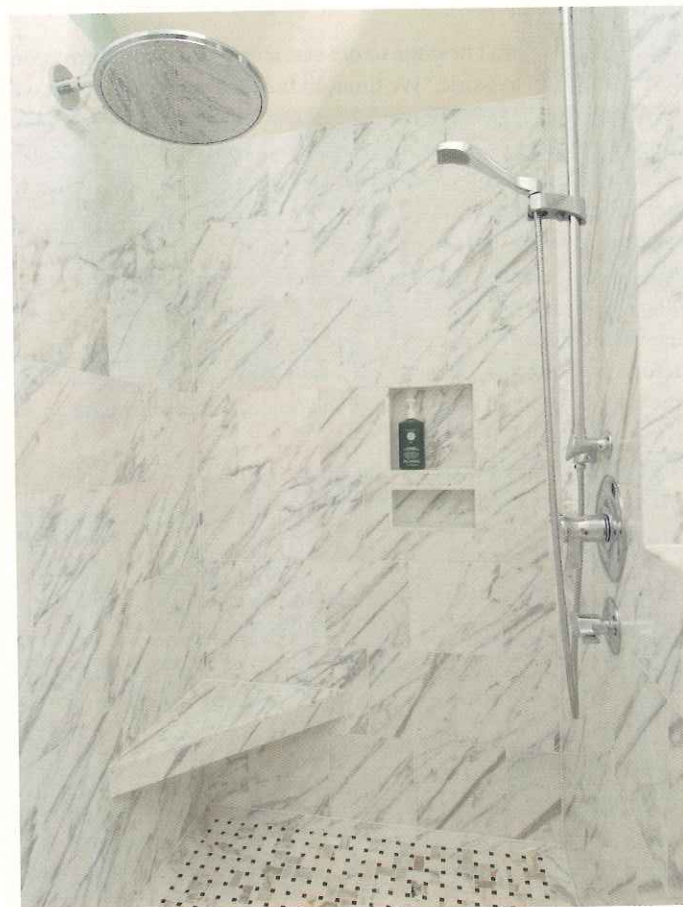
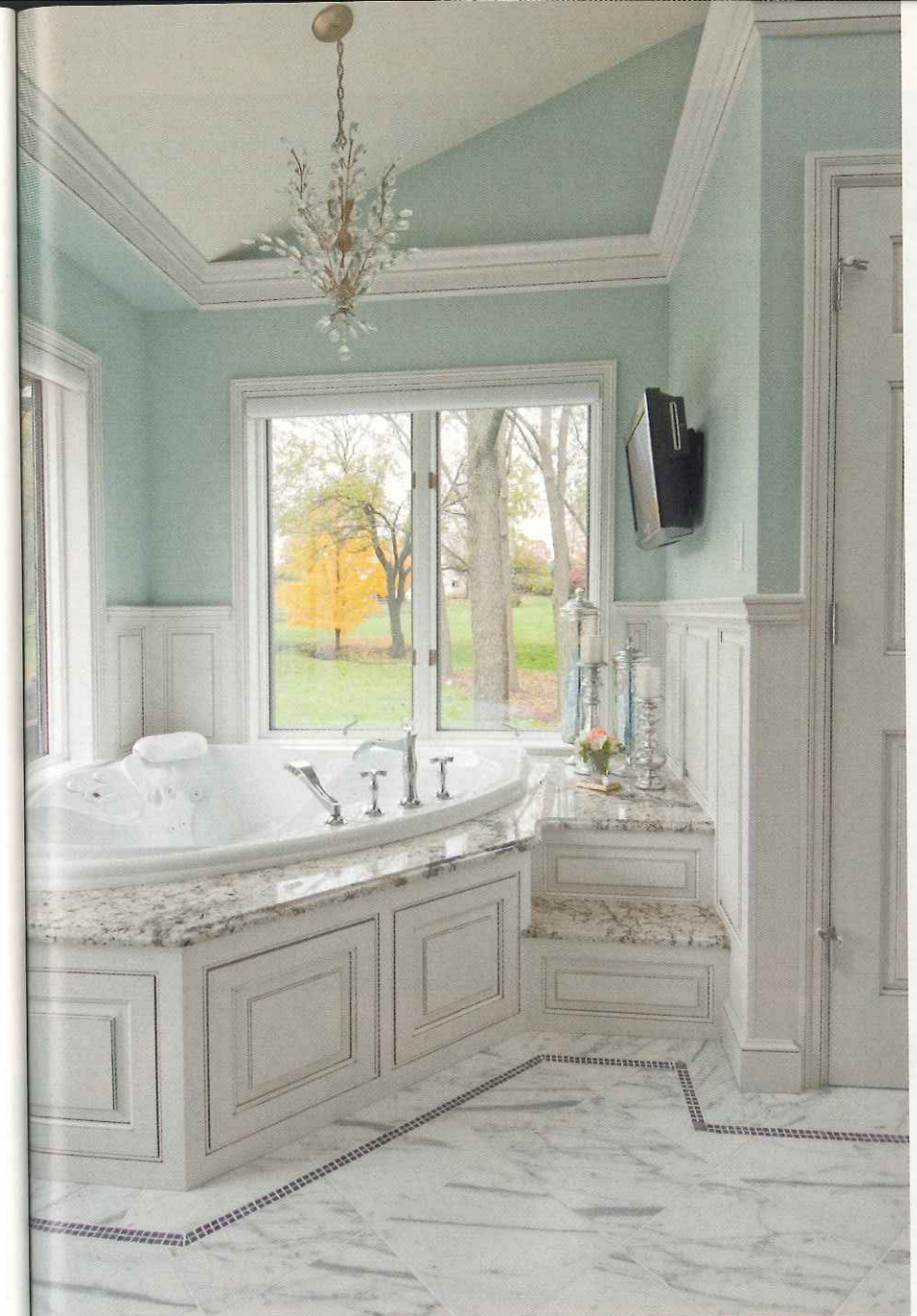


bath

a masterful bath

Designer ■ Eric Weaver
Pinnacle Building & Design

photography by
donovan roberts witmer



Carole and David Simons lived in their Lancaster County home for 18 years, but they were busy raising three daughters, including one with severe disabilities, and a bathroom upgrade never made the priority list. Extensive smoke damage from a fire in late 2007 changed all that.

The Simonses approached Pinnacle Building & Design of Lancaster, for a design-build, turnkey job—a complete renovation from start to finish, while family members went about their lives. Designer Eric Weaver gathered selections of materials to choose from, enlisted contractors for specialized jobs, and kept the project on budget.

“Pinnacle designed something that we really loved, that’s functional and within our budget,” Carole Simons says. “They executed it with a great attention to detail, so it’s quality, and that’s the big difference.” The grain in the marble was perfectly set, the shower tiles drain just right, the carpentry is meticulous, and a floor border creates a sort of tile area rug. “All of those little things really make the space.”

Pinnacle problem-solved issues, as well. Weaver suggested eliminating a door to an unused deck and creating a walk-in shower with bench to accommodate the Simonses’ disabled daughter.

“If she’s in a wheelchair, we can roll her right into the shower,” said Simons. “She can either sit on the bench or stand with some support. She loves that rain head. She never wants to get out.”

Simons even loves “the little things you don’t see.” Panels beside each sink conceal medicine cabinets, and a hamper is between the

sinks. With an under-sink receptacle, the blow dryer is always plugged in and out of sight. That extra little stuff is beautiful, she says.

Simons didn’t realize, at first, that her desire for a marble bath was inspired by frequent trips to the Jefferson Hotel in Virginia to visit a daughter who attends the University of Richmond. “The homes are really stately, and it’s just so gorgeous,” she says. “It’s the marble and the wainscoting and the woodwork. I think it’s timeless.”

The project included master bedroom renovations and the creation of a walk-in closet from another bedroom. Carole Simons says she finally has a retreat space, complete with little luxuries like a radiant-heat floor with a timer, that makes her happy.

“I feel like our home is complete now,” she says.

Resour

Designer: Eric Weaver
Lancaster. 717-291-1111
Flooring: Heated
Shower: Walk-in
Jumbo 16-inch
Whirlpool Tub: Kohler
Cabinetry: Custom
deck with architrave
Sink faucets: B

bath

a masterful bath

Designer ■ Eric Weaver
Pinnacle Building & Design

photography by
donovan roberts witmer



Carole and David Simons lived in their Lancaster County home for 18 years, but they were busy raising three daughters, including one with severe disabilities, and a bathroom upgrade never made the priority list. Extensive smoke damage from a fire in late 2007 changed all that.

The Simonses approached Pinnacle Building & Design of Lancaster, for a design-build, turnkey job—a complete renovation from start to finish, while family members went about their lives. Designer Eric Weaver gathered selections of materials to choose from, enlisted contractors for specialized jobs, and kept the project on budget.

“Pinnacle designed something that we really loved, that’s functional and within our budget,” Carole Simons says. “They executed it with a great attention to detail, so it’s quality, and that’s the big difference.” The grain in the marble was perfectly set, the shower tiles drain just right, the carpentry is meticulous, and a floor border creates a sort of tile area rug. “All of those little things really make the space.”

Pinnacle problem-solved issues, as well. Weaver suggested eliminating a door to an unused deck and creating a walk-in shower with bench to accommodate the Simonses’ disabled daughter.

“If she’s in a wheelchair, we can roll her right into the shower,” said Simons. “She can either sit on the bench or stand with some support. She loves that rain head. She never wants to get out.”

Simons even loves “the little things you don’t see.” Panels beside each sink conceal medicine cabinets, and a hamper is between the

sinks. With an under-sink receptacle, the blow dryer is always plugged in and out of sight. That extra little stuff is beautiful, she says.

Simons didn’t realize, at first, that her desire for a marble bath was inspired by frequent trips to the Jefferson Hotel in Virginia to visit a daughter who attends the University of Richmond. “The homes are really stately, and it’s just so gorgeous,” she says. “It’s the marble and the wainscoting and the woodwork. I think it’s timeless.”

The project included master bedroom renovations and the creation of a walk-in closet from another bedroom. Carole Simons says she finally has a retreat space, complete with little luxuries like a radiant-heat floor with a timer, that makes her happy.

“I feel like our home is complete now,” she says.

Resources

Designer: Eric Weaver, Pinnacle Building & Design, Lancaster. 717-295-9626. www.pinnaclepro.biz.

Flooring: Heated Calcutta Gold marble with perimeter inlay.

Shower: Walk-in design with marble tile floor and Grohe Jumbo 16-inch rain shower head (www.grohe.com).

Whirlpool Tub: Maax Kashmir corner design (www.maax.com).

Cabinetry: Custom raised panel glazed vanity and tub deck with arched soffit and keystone accent.

Sink faucets: Brizo chrome with crystal finial (www.brizo.com).